

All TERRAIN CRANE

Euro stage IV

XCA100_E

Brief product introduction

The lifting capacity takes the lead in the industry with strong power, the 4-axle extreme 100-ton all terrain crane with high intelligent level.

Independent heavy duty suspension system with single wishbone:

The tires on left and right side move up/down separately to adapt to the road conditions, to effectively enhance the stability of steering operation at high speed and achieve excellent off-road performance when driving on the narrow road or the road with poor road conditions.



New highly efficient energy-saving hydraulic system:

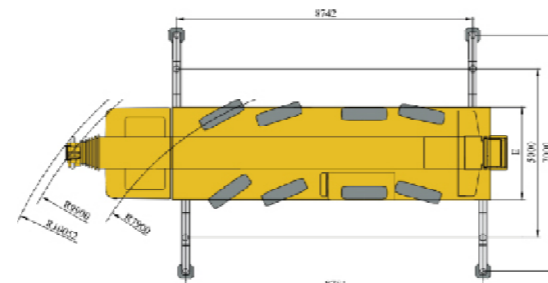
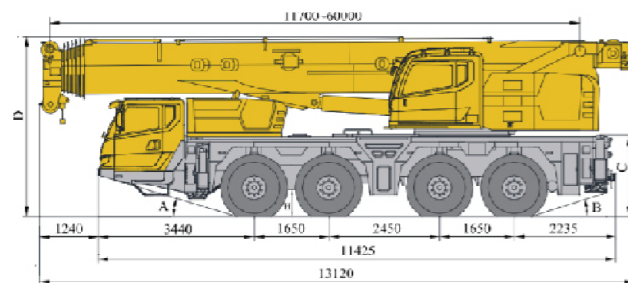
Closed hydraulic system for lifting and slewing system, equipped with large-displacement pump, lifting speed with heavy load highly. Mature double-variable mechanism with fine control tactic, matching perfectly stably. The min. stable lifting speed (at drum) is 2.5m/min, and the min. stable slewing speed is 0.1°/s.

New appearance and humanized design:

A new generation of appearance design makes the whole vehicle powerful and vigorous; Fashionable outlines of driver's cab and operator's cab bring perfect combination of sense of lays and sense of physical strength; ergonomics analysis and humanized details make inherent quality of easy driving comfortable operation and convenient maintenance.

Main Specification

Category	Item	Unit	Parameter	
Dimensions	Dimensions (length×width×height)	mm	13120×2750×4000	
	Wheel base	mm	1650+2450+1650	
	Track (Front/ Rear)	mm	2340/2340/2340/2340	
Weight	Total weight in travel	kg	48000	
Power	Engine model	—	OM471LA(Chassis)/OM934LA(Superstructure)	
	Max. output torque/rpm	N.m/(r/min)	2200/1300(Chassis)/750/ (1200~1600) (Superstructure)	
Travel	Max. travel speed	km/h	80	
	Min. turning diameter	m	15.8	
	Fuel consumption per 100 km	L	60	
Main performance	Max. total rated lifting capacity	t	100	
	Min. rated working radius	m	3	
	Outrigger span	Longitudinal	m	8.76
		Lateral	m	7 (full) /5 (half)
	Hoist height	Base boom	m	11.7
		Fully-extended boom	m	60.6
		TFully-extended boom + Jib	m	88
	Boom length	Base boom	m	11.7
		Fully-extended boom	m	60
		Fully-extended boom + Jib	m	88.2
Jib offset angle	°	0, 15, 30		



All TERRAIN CRANE

Euro stage IV

XCA130_E

Brief product introduction

Intelligent five-axle all terrain crane with high job site transfer performance.

The performance takes the lead comprehensively.:

- 6-section boom of 62 m;
- The max. Lifting load is 130 t;
- The max. Lifting height is 92.5 m;
- The max. Working radius is 72 m;
- Max. single line pull: 87KN
- Max. hoisting speed (single line, no load): 130m/min



Wireless remote control technology is applied, so the remote control of outriggers, lifting, elevating, counterweight erection, jib unfolding and folding with one person can be realized. Efficient job site transfer with various axle loads is realized, so job site transfer is more convenient.

The min. stable slewing speed is 0.1 ° /s. The min. stable lifting speed (at drum) is 2.5m/min . Precise and safe lifting movements can be realized. Dual-pump separate and confluent control technology brings higher compound movement performance in the industry with higher working efficiency.

Main Specification

Category	Item	Unit	Parameter	
Dimensions	Dimensions (length×width×height)	mm	15288×2750×3950 (14.0R25) 15288×2750×4000 (16.0R25) 15288×2850×4000 (20.5R25)	
		mm	2500+1650+2100+1650	
		mm	2296 (14.0R25) 2340 (16.0R25) 2308 (20.5R25)	
Weight	Total weight in travel	kg	60000	
Power	Engine model	—	OM471LA	
	Max. output torque/rpm	N.m/(r/min)	2300/1300	
Travel	Max. travel speed	km/h	80(14.0R25) 85(16.0R25/20.5R25)	
		m	≤18 (Tight-turning radius mode, five-axle steering) ; ≤22 (Normal road mode, five-axle steering)	
	Fuel consumption per 100 km	L	65	
Main performance	Max. total rated lifting capacity	t	130	
	Min. rated working radius	m	3	
	Outrigger span	Longitudinal	m	8.35
		Lateral	m	3.7/5/6.3/7.7
	Hoist height	Base boom	m	12.1
		Fully-extended boom	m	61.5
		Fully-extended boom + Jib	m	92.5
	Boom length	Base boom	m	13.1
		Fully-extended boom	m	62
		Fully-extended boom + Jib	m	94.5
Jib offset angle	°	0,20,40		

