

Euro Stage III

GR1805



Brief product introduction

The motor grader is mainly used for ground leveling, ditching, slope scraping, bulldozing, scarification, snow removal for large areas such as highway, airports, farmlands etc. It is the necessary

construction machinery for national defense construction, mine construction, urban and rural road construction and water conservancy construction, farmland improvement and so on.

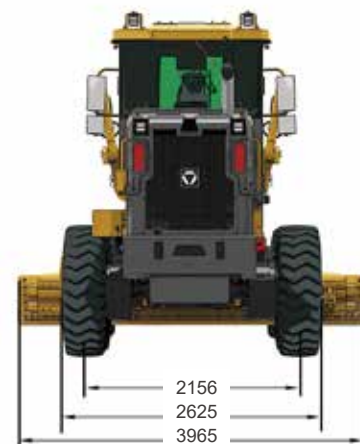
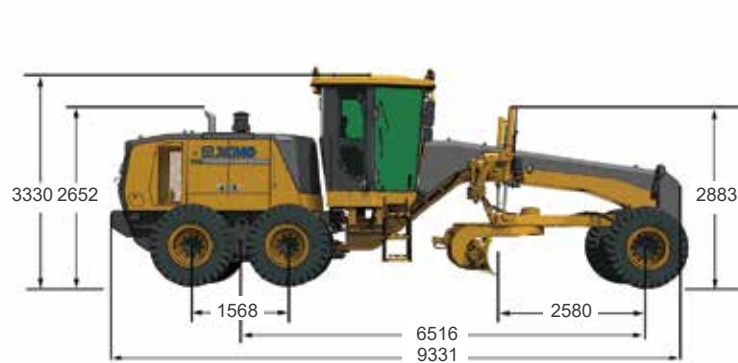
Main Specification

Basic parameter	Unit	Parameters
Engine model	/	WP6G190E330
Rated power/Speed	kW/rpm	140/2200
Overall dimension (standard)	mm	9331×2625×3330
Total weight(standard)	kg	16000
Tyre specification	/	17.5R25
Tread	mm	2156
Axle distance between front and rear	mm	6516
Tread between middle and rear wheel	mm	1568

Performance parameter	Unit	Parameters
Forward speed	km/h	5/8/13/18/30/47
Reverse speed	km/h	5/8/13
Traction force f=0.75	kN	83
Maximum gradeability	%	≥25
Working system pressure	MPa	24.5
Transmission pressure	Mpa	1.85-2.2

Working parameters	Unit	Parameters	
Maximum steering angle of front wheel	°	±48	
Maximum tilt angle of front wheel	°	±18	
Maximum swinging angle of front axle	°	±16	
Maximum swinging angle of tandem	°	±15	
Maximum steering angle of frame	°	±20	
Minimum turning radius	m	7.2	
Blade	Maximum lifting height	mm	450
	Maximum shoveling depth	mm	715
	Maximum tilt angle	°	90
	Cutting angle	°	Front 40, rear 15
	Slewing angle	°	360
	Length × chord height	mm	3965×610

Oil filling capacity	Unit	Parameters
Coolant	L	50
Fuel tank	L	380
Engine	L	24
Transmission	L	38
Tandem	L	120
Drive axle	L	36
Hydraulic oil	L	270



Euro Stage III

GR2205



Brief product introduction

The motor grader is mainly used for ground leveling, ditching, slope scraping, bulldozing, scarification, snow removal for large areas such as highway, airports, farmlands etc., also can be used in heavy duty and mining areas. It is the necessary construction

machinery for national defense construction, mine construction, urban and rural road construction and water conservancy construction, farmland improvement and so on.

Main Specification

Basic parameter	Unit	Parameters
Engine model	/	QSB6.7
Rated power/Speed	kW/rpm	164/2200
Overall dimension (standard)	mm	9343×2625×3432
Total weight(standard)	kg	16500
Tyre specification	/	17.5R25
Tread	mm	2156
Axle distance between front and rear	mm	6479
Tread between middle and rear wheel	mm	1538

Performance parameter	Unit	Parameters
Forward speed	km/h	5/9/12/20/25/45
Rearward speed	km/h	5/12/25
Traction force f=0.75	kN	≥85
Maximum gradeability	%	≥25
Working system pressure	MPa	24.5
Transmission pressure	Mpa	1.6-1.8

Working parameters	Unit	Parameters	
Maximum steering angle of front wheel	°	±48	
Maximum tilt angle of front wheel	°	±17	
Maximum swinging angle of front axle	°	±15	
Maximum swinging angle of tandem	°	Front 15, rear 15	
Maximum steering angle of frame	°	±25	
Minimum turning radius	m	7.6	
Blade	Maximum lifting height	mm	480
	Maximum shoveling depth	mm	755
	Maximum tilt angle	°	90
	Cutting angle	°	Front 40, rear 5
	Slewing angle	°	360
	Length × chord height	mm	4270×610

Oil filling capacity	Unit	Parameters
Coolant	L	50
Fuel tank	L	390
Engine	L	24
Transmission box	L	38
Balance box	L	75
Drive axle	L	25
Hydraulic oil	L	105

